



The rapid test system that we have developed, allows you within minutes to assess the average consumption of product required per layer per m². Our “spoon” test consists of applying a certain amount of water on a substrate to determine the absorption rate of the material.

POROSITY TEST ON A VERTICAL SUPPORT :

- 1) Take a soup spoon, fill it in with water.



- 2) Put the tip of the spoon in contact with the support.



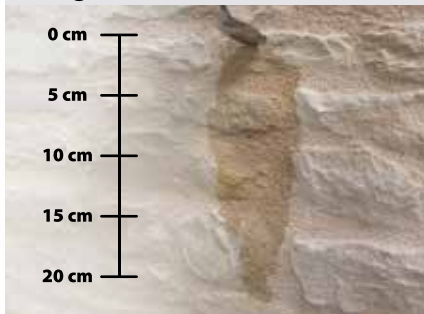
- 3) Let the water run along the support.



- 4) Measure the length of the column of water :

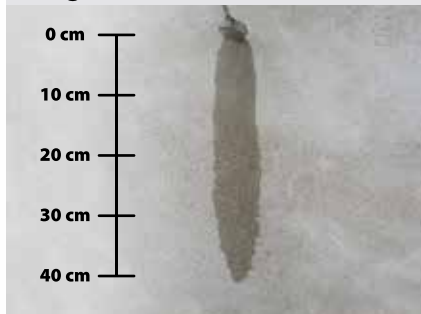
From 0 to 20 cm :

200 g / m² : 1 litre = 5 m²



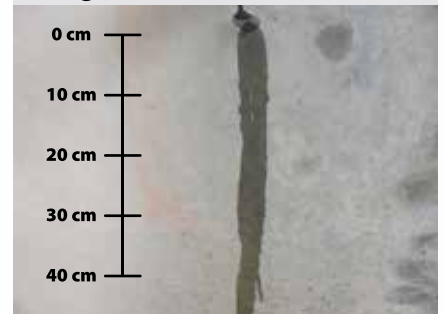
From 20 to 40 cm :

140 g / m² : 1 litre = 7 m²



More than 40 cm :

100 g / m² : 1 litre = 10 m²



POROSITY TEST ON A HORIZONTAL SUPPORT :

- 1) Take a soup spoon, fill it in with water.



- 2) Put the tip of the spoon in contact with the support.



- 3) Pore the water on the support.



- 4) Measure the time it takes for the material to absorb the water :

From 0 to 3 minutes :

200 g / m² : 1 litre = 5 m²



From 3 to 5 minutes :

140 g / m² : 1 litre = 7 m²



More than 5 minutes :

100 g / m² : 1 litre = 10 m²



This test gives an indicative value which corresponds to the common uses of our products. They are the result of tests conducted objectively in our laboratories. The Consumptions above are average consumptions that is sufficient in 95% of cases, however, a slightly or very porous material may modify consumptions rate.

CONSUMPTION AND AVERAGE COSTS PER M2

TREATMENTS

	MINERALIZER TS Water-repellent All Supports	MINERALIZER B Water-repellent Concrete	MINERALIZER RC Capillary action	MINERALIZER TF Water-repellent Roofs Facades
Slates	✓ 1 Litre = 12 m ² / €			
Concrete		✓ 1 Litre = 5 m ² / €		
Cast Concrete	✓ 1 Litre = 5 m ² / €	✓ 1 Litre = 5 m ² / €		
Decorative concrete (not waxed)	✓ 1 Litre = 8 m ² / €			
Deactivated concrete	✓ 1 Litre = 5 m ² / €	✓ 1 Litre = 6 m ² / €		
Dusty concrete		✓ 1 Litre = 3 m ² / €		
Bricks	✓ 1 Litre = 5 m ² / €			
Porous tiles	✓ 1 Litre = 8 m ² / €			
Terra-cotta tiles	✓ 1 Litre = 5 m ² / €			
Restored paving	✓ 1 Litre = 5 m ² / €			
Concrete surface hardener		✓ 1 Litre = 5 m ² / €		
One Coat Render				✓ 1 Litre = 5 m ² / €
Render for cement facades		✓ 1 Litre = 3 m ² / €		
Fibro-cement				✓ 1 Litre = 5 m ² / €
Tile grout	✓ 1 Litre = 12 m ² / €			
Marble	✓ 1 Litre = 12 m ² / €			
Foundation walls		✓ 1 Litre = 5 m ² / €		
Granite walls			✓ 5 Litres / ml / €	
Concrete blocks walls			✓ 3 Litres / ml / €	
Bricks walls			✓ 3 Litres / ml / €	
Limestone walls			✓ 5 Litres / ml / €	
Limestones	✓ 1 Litre = 5 m ² / €			
Terra-cotta tiles				✓ 1 Litre = 6 m ² / €
Concrete Tiles				✓ 1 Litre = 6 m ² / €

* We recommend a first mineralisation before applying water-repellent beading effect and wet finish.

CLEANERS

	Cleaner Roof/Facade/Terrace (mosses, lichens, mould)	Hydro-Net urban ground stripper (Stains, greases, pollutants, carbonatations)
Slates	✓ 1 Litre = 8 m ² / €	
Concrete	✓ 1 Litre = 8 m ² / €	✓ 1 Litre = 10 m ² / €
Deactivated concrete	✓ 1 Litre = 8 m ² / €	✓ 1 Litre = 8 m ² / €
Bricks	✓ 1 Litre = 8 m ² / €	
Tiles + Tile grout	✓ 1 Litre = 8 m ² / €	✓ 1 Litre = 12 m ² / €
Terra-cotta tiles	✓ 1 Litre = 8 m ² / €	✓ 1 Litre = 10 m ² / €
Restored paving	✓ 1 Litre = 8 m ² / €	✓ 1 Litre = 10 m ² / €
One Coat Render	✓ 1 Litre = 7 m ² / €	
Render for cement facades	✓ 1 Litre = 7 m ² / €	
Fibro-cement	✓ 1 Litre = 7 m ² / €	
Bricks walls	✓ 1 Litre = 7 m ² / €	
Limestone walls	✓ 1 Litre = 7 m ² / €	
Limestone Floors	✓ 1 Litre = 8 m ² / €	✓ 1 Litre = 10 m ² / €
Granite Floors	✓ 1 Litre = 8 m ² / €	✓ 1 Litre = 7 m ² / €
Terra-cotta tiles	✓ 1 Litre = 8 m ² / €	
Concrete Tiles	✓ 1 Litre = 8 m ² / €	

The production cost varies depending on the consumption of the product in relation to the porosity. Consumptions indicated above are average consumptions.

To determine the exact porosity: see our chart on our website, www.hydro-mineral.fr or with your nearest retailer.